

QSV 2200-3200 75-125hp

Set to meet your specific vacuum demands and tackle your daily challenges, we offer you the QSV rotary screw vacuum pumps. Immediately ready to supply high quality vacuum, this powerful solution provides you with the exceptional reliability and efficiency needed for your rough vacuum applications.



1 Advanced Air Logic 3 Controller

2 Innovative Oil-Injected Screw Airend

3 Cyclonic Oil Separation <0.6 ppm Oil Carryover

4 Sound Insulating Canopy

5 Modulating Inlet Check Valve

6 Variable Speed Drive with Energy-Saving Setpoint Control Technology

7 Premium Efficiency IE3 motor

8 Service-Friendly Oil Separator Design

QSV 2200-3200 75-125 HP

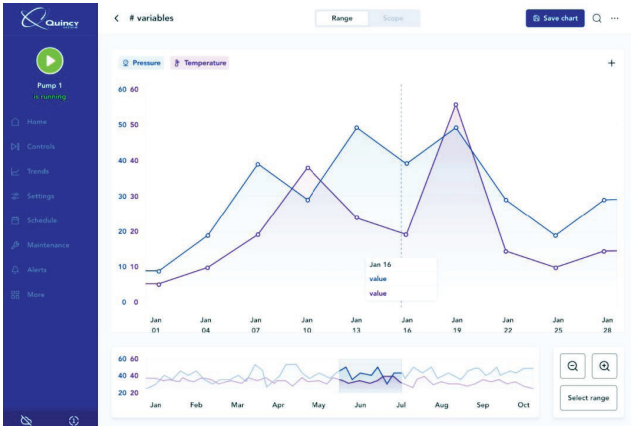
The QSV Is Best For:

- ✓ Plastic Thermoforming
- ✓ Glass Molding
- ✓ Holding, Lifting, Moving
- ✓ Printing, Envelopes, Other Paper Processes
- ✓ Food Packaging/Preservation
- ✓ General Packaging and Canning

- ✓ Lab, Pharmaceutical, and Medical Vacuum
- ✓ Those looking for a premium variable speed rotary screw vacuum option
- ✓ Customers with energy efficiency in mind
- ✓ Facilities requiring low oil carryover vacuum pumps
- ✓ Rough vacuum applications operating at 18-29.9" HgV

Air Logic 3 Controller with 7" HMI Touchscreen

- Configurable Home Screen Interface
- 4 Modes Pre-Set at Factory
 - Medium PI Control
 - Slow PI Control
 - Forced to Max Speed
 - Fixed Speed Control
- Customize Your Own Pump Modes!



- Plot Any Parameter
- View Trends of Pump Metrics Over a Customizable Time Period Including Inlet Pressure, Motor Speed, Power Consumption, Oil Temperature, and more.
- Plot Multiple Metrics at Once
- Many Fieldbus Protocols Available Without Gateway!



QSV 2200-3200 TECHNICAL DATA

Model No.	Vacuum Pressure		Maximum Displacement		Installed Motor		Max Noise Level	Weight		Inlet Size	Outlet Size
	Minimum	Maximum						Standard			
	HgV	HgV	m ³ /h	cfm	kW	HP	dB(A)	kg	lb	ANSI 150#	ANSI 150#
QSV-2200	18	29.9	3724	2192	56	75	86	3945	8697	8"	6"
QSV-2700	18	29.9	4494	2645	75	100	87	3980	8774	8"	6"
QSV-3200	18	29.9	5136	3023	93	125	88	4000	8818	8"	6"

Model No.	Standard		
	Length (mm/in)	Width (mm/in)	Height (mm/in)
QSV-2200	2871/113	1956/77	1905/75
QSV-2700	2871/113	1956/77	1905/75
QSV-3200	2871/113	1956/77	1905/75

*Cooling offered in Air Cooled, Water Cooled and Energy Recovery

WARRANTY INFORMATION

ROYAL BLUE	10 Year Factory Warranty
	Vacuum Pump Package - One year from date of start-up or 18 months from date of shipment from the factory, whichever occurs first.
	Airend - Ten years from date of startup.
	Air and Fluid Heat Exchangers - 5 years from date of start-up.
	Drive Motors - Five years from date of start-up.
	Drive Coupling Elements - Five years from date of start-up.
	Variable Speed Drives - Five years from date of start-up.
	Oil Separator Tanks - Five years from date of start-up.