

STARTERS *Continued*



91-01-3780

Can replace Delco Remy 35MT™, 12 Volt, 10 Tooth Drive, CW Rotation
Used in 1961-85 various Bobcat, Clark, International, John Deere, Massey Ferguson industrial equipment with International, John Deere, Perkins diesel engines. For 37MT™ use 91-01-4148.

91-01-3948

Can replace Delco Remy 50MT™, 24 Volt, 11 Tooth Drive, CW Rotation
Used in various 1955 and up earthmoving and heavy industrial equipment.

91-01-4037

Can replace Delco Remy 27MT™, 12 Volt, 10 Tooth Drive, CW Rotation
Used in 1961-89 various Bobcat, Clark, John Deere industrial equipment with John Deere diesel engines. For 28MT™ use 91-01-4419.

91-01-4140

Can replace Delco Remy 37MT™, 12 Volt, 10 Tooth Drive, CW Rotation
Used in 1985-94 various Caterpillar industrial equipment with Caterpillar diesel engines.

91-01-4158

Can replace Delco Remy 42MT™, 24 Volt, 12 Tooth Drive, CW Rotation
Used in various 1983 and up earthmoving and heavy industrial equipment.

91-01-4159

Can replace Delco Remy 42MT™, 24 Volt, 11 Tooth Drive, CW Rotation
Used in various 1983 and up earthmoving and heavy industrial equipment.

91-01-4188

Can replace Delco Remy 10MT™, 12 Volt, 9 Tooth Drive, CW Rotation
Used in 1966-86 various Allis Chalmers, Bobcat, Clark, Hyster, Minneapolis Moline industrial equipment with Continental, Waukesha gas engines.

91-01-4215

Can replace Delco Remy 25MT™, 12 Volt, 10 Tooth Drive, CW Rotation
Used in 1971-89 various Bobcat, John Deere industrial equipment with John Deere diesel engines. For 28MT™ use 91-01-4362.

91-01-4400

Can replace Delco Remy 42MT™, 24 Volt, 12 Tooth Drive, CW Rotation
Used in 1975 and up various John Deere equipment and Caterpillar graders.

91-01-4483

Can replace Delco Remy 41MT™, 24 Volt, 12 Tooth Drive, CW Rotation
Used in 1993 and up various Caterpillar equipment.

91-01-4562

Can replace Delco Remy 42MT™, 24 Volt, 12 Tooth Drive, CW Rotation
Used in 2002 and up Atlas Copco mining equipment.

91-17-8882

Can replace Lucas M50, 2.8KW, 12 Volt, 10 Tooth Drive, CW Rotation
Used in 1967-97 various Ford industrial equipment with Ford gas and diesel engines.



91-23-6508

Can replace Iskra PLGR, 12 Volt, 10 Tooth Drive, CW Rotation
Used in 1997 and up Bell and John Deere backhoes and loaders.

91-29-5018

Can replace Denso 4.0KW, 12 Volt, 10 Tooth Drive, CW Rotation
Used in 1961-84 various John Deere industrial equipment with John Deere diesel engines.

91-29-5035

Can replace Denso OSGR, 12 Volt, 13 Tooth Drive, CW Rotation
Used in 1975-94 Case crawlers, loaders, skid steer loaders and uni-loaders.

91-29-5038

Can replace Denso 4.0KW, 12 Volt, 10 Tooth Drive, CW Rotation
Used in 1981-02 various John Deere industrial equipment with John Deere diesel engines. For 4.8KW, Offset Gear Reduction use 91-29-5457.

91-29-5138

Can replace Denso 2.7KW, 12 Volt, 13 Tooth Drive, CW Rotation, Offset Gear Reduction
Used in 1984-05 various Case, Cedar Rapids, Ford, Gradall, JLG industrial equipment with Case, Cummins diesel engines.

91-29-5372

Can replace Denso OSGR, 12 Volt, 13 Tooth Drive, CW Rotation
Used in 1995 and up Atlas Copco, Broce Broom, Gorman-Rupp and Sullair equipment.

91-29-5384

Can replace Denso OSGR, 12 Volt, 10 Tooth Drive, CW Rotation
Used in 1992 and up Barber Greene and Caterpillar.

91-29-5457

Can replace Denso OSGR, 12 Volt, 11 Tooth Drive, CW Rotation
Used in 1993 and up John Deere crawlers and loaders.

91-29-5616

Can replace Denso OSGR, 12 Volt, 13 Tooth Drive, CW Rotation
Used in 2005 and up Trackless MT tractors.

*Pictures are a representation only.



CANADA Toll Free Telephone 877-480-4034
USA Toll Free Telephone 866-694-1360
www.wilsonautoelectric.com



STARTERS *Continued*

WILIND-02 0214



"Quality Electrical Products"



POPULAR INDUSTRIAL ALTERNATORS & STARTERS



Check out our new e-Catalog today at www.wilsonautoelectric.com

Starting & Charging the WORLD!

ALTERNATORS



90-01-3030



90-01-3071



90-01-3081



90-01-3100



90-01-3131A



90-01-3151



90-01-3157



90-01-4334



90-01-4397



90-01-4535



90-05-9024



90-05-9076

90-01-3030

Can replace Delco Remy 25SI™, 24 Volt, 50 Amp. Brushless Design

Used in 1968-96 various Allis Chalmers, Case, Clark, Caterpillar, Dresser, Euclid, Fiat-Allis, International Harvester, Komatsu, Terex, Wabco industrial equipment with Allis Chalmers, Caterpillar, Cummins, Detroit, International, Waukesha diesel engines. For 75 amp. use 90-01-3099.

90-01-3071

Can replace Delco Remy 27SI™, 12 Volt, 80 Amp.

Used in 1970-96 various Allis Chalmers, Austin Western, Caterpillar, Clark, Hyster, IHC, Terex, Whiting Corp. industrial equipment with Caterpillar, Cummins, Detroit diesel engines. For 100 amp. use 90-01-3117.

90-01-3081

Can replace Delco Remy 10SI™, 12 Volt, 72 Amp.

Used in 1961-92 various Allis Chalmers, Austin Western, Bomag, Case, Clark, International, John Deere industrial equipment with Allis Chalmers, Case, Cummins, Detroit, John Deere and Perkins diesel engines. For 100 amp. use 90-01-3081A. For unit with one wire hookup, self exciting regulator use 90-01-3081S.

90-01-3100

Can replace Delco Remy 27SI™, 24 Volt, 65 Amp.

Used in 1970-95 various Case, Clark, Drott, Ingersoll Rand, International, Kobelco, Terex industrial equipment with Cummins, Case, Consolidated Diesel, Detroit, International diesel engines.

90-01-3131A

Can replace Delco Remy 10SI™, 12 Volt, 100 Amp.

Used in 1968-92 various Bobcat, Dresser, John Deere industrial equipment with Cummins and John Deere diesel engines. Supplied with chaff guard screen.

90-01-3151

Can replace Delco Remy 15SI™, 12 Volt, 105 Amp.

Used in 1985-99 various Elgin Sweeper, John Deere industrial equipment with John Deere and Isuzu diesel engines.

90-01-3157

Can replace Delco Remy 20SI™, 24 Volt, 45 Amp.

Used in 1979 and up various Case, Caterpillar, Consolidated Diesel, Jet Edge, Kobelco, Komatsu and Sullair equipment.

90-01-4334

Can replace Delco Remy 21SI™, 24 Volt, 70 Amp.

Used in 1997 and up Caterpillar track tractors and wheel loaders.

90-01-4397

Can replace Delco Remy 22SI™, 24 Volt, 70 Amp.

Used in 2000 and up New Holland and Komatsu excavators.

90-01-4535

Can replace Delco Remy 11SI™, 12 Volt, 95 Amp.

Used in 2005 and up Trackless MT tractors.

90-05-9024

Can replace Prestolite (Motorola) 12 Volt, 51 Amp.

Used in 1960-97 various John Deere industrial equipment with John Deere gas and diesel engines.

90-05-9076

Can replace Prestolite (Motorola) 12 Volt, 51 Amp.

Used in 1975-90 various Ford industrial equipment with Ford gas and diesel engines.

ALTERNATORS *Continued*



90-05-9124



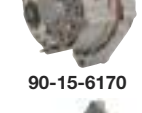
90-05-9156



90-05-9158



90-15-6170



90-15-6218



90-15-6285



90-15-6291



90-17-8048



90-20-3548



90-20-3573



90-29-5036

90-05-9124

Can replace Prestolite (Motorola) 12 Volt, 130 Amp.

Used in 1982-02 various Champion, Vermeer and other industrial equipment with Detroit and Caterpillar diesel engines. This unit commonly recognized and well known as the "Triple Nickel". For 140 Amp. use 90-05-9253.

90-05-9156

Can replace Prestolite (Motorola) 12 Volt, 65 Amp.

Used in 1996 and up Ingersoll Rand compactors and tow tractors.

90-05-9158

Can replace Prestolite (Motorola) 12 Volt, 90 Amp.

Used in 1987-00 various John Deere industrial equipment with John Deere diesel engines.

90-15-6170

Can replace Bosch K1, 12 Volt, 65 Amp.

Used in 1984-04 various Atlas Copco, Bell, Bomag, Case, Godwin, Harlo, Ingersoll Rand, JLG, John Deere, PSI, Rosco, Sullair, Sweepmaster, Vermeer industrial equipment with Case, Cummins, Deutz, John Deere diesel engines.

90-15-6218

Can replace Bosch K1, 12 Volt, 95 Amp.

Used in 1985-04 various John Deere, industrial equipment with John Deere diesel engines.

90-15-6285

Can replace Bosch N1, 24 Volt, 55 Amp.

Used in 1982 and up various Case and Caterpillar construction equipment and Prinoth groomers.

90-15-6291

Can replace Bosch K1, 12 Volt, 65 Amp.

Used in 1992-06 various Bell, John Deere, industrial equipment with Deutz, John Deere diesel engines.

90-17-8048

Can replace Lucas A127, 12 Volt, 65 Amp.

Used in 1982-06 various JCB industrial equipment with Perkins diesel engines.

90-20-3548

Can replace Valeo (Paris Rhone), 12 Volt, 50 Amp.

Used in 1995 and up Atlas Copco compressors and John Deere engines and power units.

90-20-3573

Can replace Valeo, 12 Volt, 35 Amp.

Used in 1986-93 Ingersoll Rand and Gardner-Denver compressors.

90-29-5036

Can replace Denso 12 Volt, 90 Amp.

Used in 1975-94 various John Deere industrial equipment with John Deere diesel engines.

ALTERNATORS *Continued*



90-29-5180



90-29-5438



90-31-7000



90-36-9502



90-36-9504



90-36-9509



91-01-3700



91-01-3701



91-01-3702



91-01-3703

90-29-5180

Can replace Denso 12 Volt, 40 Amp.

Used in 1992-06 various Boss Industries, Buhler, Grasshopper, Grove Manufacturing, Ingersoll Rand, Jacobson, Kubota, Ransomes, Thomas, Toro industrial equipment with Kubota diesel engines.

90-29-5438

Can replace Denso, 24 Volt, 65 Amp.

Used in 1996 and up Caterpillar track tractors.

90-31-7000

Can replace Mando 12 Volt, 55 Amp.

Used in 1981-06 various Bobcat industrial equipment with Deutz, Kubota, Isuzu, Perkins, Ford, Kohler, Mitsubishi gas and diesel engines.

90-36-9502

Can replace Magneton, 12 Volt, 55 Amp.

Used in 1995 and up Atlas Copco and Sullair compressors and various John Deere equipment.

90-36-9504

Can replace Magneton, 12 Volt, 55 Amp.

Used in 1996 and up Atlas Copco, Grimmer Schmidt, Ingersoll Rand and Sullair compressors and generators.

90-36-9509

Can replace Magneton, 12 Volt, 55 Amp.

Used in 1994 and up various Atlas Copco, Compac, Dynapac, Ingersoll Rand, John Deere, and Sullair equipment.

STARTERS

91-01-3700

Can replace Delco Remy 40MT™, 24 Volt, 11 Tooth Drive, CW Rotation

Used in 1959-84 various Adams Division, Allis Chalmers, Austin Western, Case, Caterpillar, Clark, Dresser, Drott, Euclid, Fiat Allis, Galion, Grove, Hough, International, Le Tourneau, Massey Ferguson, Terex, Wabco industrial equipment with Allis Chalmers, Caterpillar, Cummins, Detroit, Fiat, GMC, International, Murphy, Waukesha gas and diesel engines. For 42MT™ use 91-01-4159.

91-01-3701

Can replace Delco Remy 40MT™, 12 Volt, 11 Tooth Drive, CW Rotation

Used in 1960-84 various Adams Division, Allis Chalmers, Austin Western, Case, Caterpillar, Champion, Clark, Drott, Euclid, Galion, Grove, Hough, Hy-Dynamic, Hyster, International, John Deere, Le Tourneau, Terex, Wabco industrial equipment with Allis Chalmers, Caterpillar, Cummins, Detroit, GMC, John Deere, Waukesha gas and diesel engines. For 42MT™ use 91-01-4166.

91-01-3702

Can replace Delco Remy 40MT™, 12 Volt, 12 Tooth Drive, CW Rotation

Used in 1963-84 various Case, Caterpillar, Clark, Drott, Dynapac, Grove, Hyster, Massey Ferguson industrial equipment with Case, Caterpillar, Cummins, Perkins diesel engines. For 42MT™ use 91-01-4161.

91-01-3703

Can replace Delco Remy 40MT™, 24 Volt, 12 Tooth Drive, CW Rotation

Used in 1963-84 various Case, Caterpillar, Drott, Fiat Allis, Grove, Massey Ferguson, Sullair industrial equipment with Case, Caterpillar, Cummins, Fiat diesel engines. For 42MT™ use 91-01-4158.

* Pictures are a representation only.