

THE IMPORTANCE OF FILTERING POWER STEERING SYSTEMS

- Fluid contamination is the leading cause of power steering component failure.
- Internal hose linings can degrade over time, causing debris to circulate through the system. The contaminated fluid clogs valves and remote reservoirs (*Image 1*), and decreases the lubricating properties of the fluid.
- Clogged OE remote reservoirs (*Image 2*) restrict the flow of fluid, which can starve the pump, causing premature pump failure.
- Cleaning or replacing remote reservoirs is an essential part of the complete power steering installation.
- Installing an in-line filter (*Image 3*) to catch debris before it reaches critical steering components, ensures long power steering system service life.
- In the event the paper element clogs, in-line filters have a built-in bypass preventing flow restrictions in the steering system.



Image 1

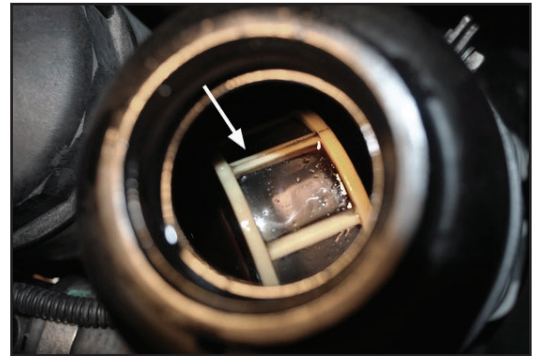


Image 2



Image 3