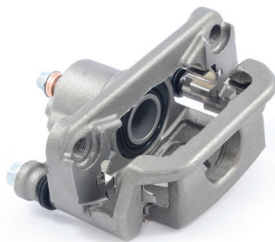




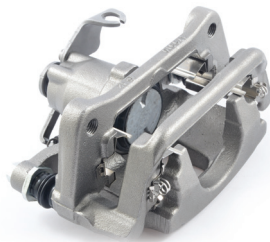
OCTOBER 2016

# UPDATED APPLICATION COVERAGE

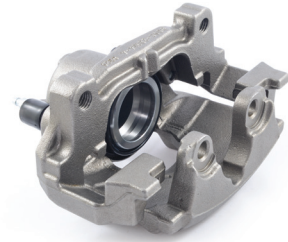
## Automotive brake calipers



Part #: **99-00650B**  
2013-15 Nissan Altima



Part #: **99-17765B**  
2012 Chrysler Routan; 2016-12 Caravan,  
Grand Caravan, Mini Ram, Royal Van; 2015-12  
Town & Country, Voyager - Mini Van



Part #: **99-17988A**  
2013-14 Ford MKZ; 2015-16 MKZ;  
2013 Fusion; 2014-16 Fusion

**ADDED COVERAGE FOR OVER 25,000,000 VEHICLES!**



# UPDATED APPLICATION COVERAGE

OCTOBER 2016

PART #	TYPE	APPLICATION	LOCATION	VEHICLES IN OPERATION	POP CODE
99-17768A	CALIPER	2014-12 CHRYSLER ROUTAN; 2015-14 RAM C/V, CARGO VAN; 2013-12 CARAVAN, GRAND CARAVAN, MINI RAM, ROYAL VAN; 2016-14 CARAVAN, GRAND CARAVAN, MINI RAM, ROYAL VAN; 2015-12 TOWN & COUNTRY, VOYAGER - MINI VAN; 2014 NEWPORT, ROYAL, TOWN & COUNTRY, 300	FRONT	1,071,246	C
99-17768B	CALIPER	2014-12 CHRYSLER ROUTAN; 2015-14 RAM C/V, CARGO VAN; 2013-12 CARAVAN, GRAND CARAVAN, MINI RAM, ROYAL VAN; 2016-14 CARAVAN, GRAND CARAVAN, MINI RAM, ROYAL VAN; 2015-12 TOWN & COUNTRY, VOYAGER; 2014 NEWPORT, ROYAL, TOWN & COUNTRY, 300	FRONT	1,071,246	C
97R00867B	CALIPER	2015-10 HYUNDAI/KIA GENESIS COUPE	FRONT	69,036	W
97R00867A	CALIPER	2015-10 HYUNDAI/KIA GENESIS COUPE	FRONT	69,036	W
99-17433A	CALIPER	2011 GM/SAAB 9-5; 2015-13 MALIBU, CLASSIC; 2016-11 REGAL; 2016-12 LACROSSE	FRONT	912,278	D
99-17433B	CALIPER	2011 GM/SAAB 9-5; 2015-13 MALIBU, CLASSIC; 2016-11 REGAL; 2016-12 LACROSSE	FRONT	912,278	D
99-17762B	CALIPER	CHRYSLER 2016-12 CHALLENGER; 2015-12 300 SERIES; 2014 200	FRONT	819,708	C
99-17762A	CALIPER	CHRYSLER 2016-12 CHALLENGER; 2015-12 300 SERIES; 2014 200	FRONT	819,708	C
99-00972A	CALIPER	2015-12 HONDA CIVIC	FRONT	919,138	D
99-00972B	CALIPER	2015-12 HONDA CIVIC	FRONT	919,138	D
99-00650A	CALIPER	2015-13 NISSAN ALTIMA	REAR	1,082,020	C
99-00650B	CALIPER	2015-13 NISSAN ALTIMA	REAR	1,082,020	C
99-00871A	CALIPER	2016-12 HYUNDAI/KIA RIO, RIO 5; 2012 ELANTRA; 2016-12 ACCENT	FRONT	550,796	D
99-00871B	CALIPER	2016-12 HYUNDAI/KIA RIO, RIO 5; 2012 ELANTRA; 2016-12 ACCENT	FRONT	550,796	D
99-00873B	CALIPER	2015-14 HYUNDAI/KIA FORTE, FORTE5, FORTE KOUP; 2016-12 VELOSTER; 2016-13 ELANTRA	FRONT	341,103	W
99-00873A	CALIPER	2015-14 HYUNDAI/KIA FORTE, FORTE5, FORTE KOUP; 2016-12 VELOSTER; 2016-13 ELANTRA	FRONT	341,103	W
99-17765B	CALIPER	2015-12 CHRYSLER CARAVAN, GRAND CARAVAN, TOWN & COUNTRY; 2016-12 ROYAL VAN; 2012 ROUTAN	REAR	989,991	D
99-17765A	CALIPER	2015-12 CHRYSLER CARAVAN, GRAND CARAVAN, TOWN & COUNTRY; 2016-12 ROYAL VAN; 2012 ROUTAN	REAR	989,991	D
99-17983A	CALIPER	2016-14 FORD TRANSIT CONNECT; 2016-13 FOCUS; 2016-13 ESCAPE	FRONT	1,034,836	D
99-17983B	CALIPER	2016-14 FORD TRANSIT CONNECT; 2016-13 FOCUS; 2016-13 ESCAPE	FRONT	1,034,836	D
99-17985A	CALIPER	2016-13 FORD MKT; 2016-13 MKS; 2016-13 TAURUS, POLICE INTERCEPTOR SEDAN; 2016-13 FLEX; 2016-13 EXPLORER, EXPLORER SPORT TRAC, POLICE INTERCEPTOR UTILITY	FRONT	219,159	W
99-17985B	CALIPER	2016-13 FORD MKT; 2016-13 MKS; 2016-13 TAURUS, POLICE INTERCEPTOR SEDAN; 2016-13 FLEX; 2016-13 EXPLORER, EXPLORER SPORT TRAC, POLICE INTERCEPTOR UTILITY	FRONT	219,159	W
99-17986B	CALIPER	2016-13 FORD MKT; 2016-13 MKS; 2016-13 TAURUS, POLICE INTERCEPTOR SEDAN; 2016-13 FLEX; 2016-13 EXPLORER, EXPLORER SPORT TRAC, POLICE INTERCEPTOR UTILITY	REAR	235,872	W
99-17986A	CALIPER	2016-13 FORD MKT; 2016-13 MKS; 2016-13 TAURUS, POLICE INTERCEPTOR SEDAN; 2016-13 FLEX; 2016-13 EXPLORER, EXPLORER SPORT TRAC, POLICE INTERCEPTOR UTILITY	REAR	235,872	W
99-17988A	CALIPER	2016-13 FORD/LINCOLN MKZ; 2016-14 FUSION	FRONT	971,153	D
99-17988B	CALIPER	2016-13 FORD/LINCOLN MKZ; 2016-14 FUSION	FRONT	971,153	D
99-18024B	CALIPER	2016-13 FORD ESCAPE; 2016-13 C-MAX	REAR	1,166,815	D
99-18024A	CALIPER	2016-13 FORD ESCAPE; 2016-13 C-MAX	REAR	1,166,815	D
99-17976A	CALIPER	2016-13 FORD FOCUS; 2016-13 C-MAX	FRONT	1,092,481	C
99-17976B	CALIPER	2016-13 FORD FOCUS; 2016-13 C-MAX	FRONT	1,092,481	C
99-17756B	CALIPER	2013-11 CHRYSLER GRAND CHEROKEE; 2015-11 DURANGO	FRONT	1,164,189	D
99-17756A	CALIPER	2013-11 CHRYSLER GRAND CHEROKEE; 2015-11 DURANGO	FRONT	1,164,189	D

POPULARITY RANKING	
A.....	Top 60%
B.....	Next 20%
C.....	Next 15%
D.....	Last 5%
W.....	Non-Stock Item

These new part numbers and the related applications are available for viewing using BBB Industries' e-catalog found at [www.bbbind.com](http://www.bbbind.com). Availability of new number information in the data receivers may not be reflected for up to ninety days.



Scan to visit our website