

Thermo Scientific EASY-nLC II – Specifically Designed for Proteomic Applications

Customer Benefits



The Thermo Scientific EASY-nLC II has been specially designed to boost the productivity of proteomic laboratories. This nano-LC instrument offers an effortless split-free nanoflow pumping system with unrivaled ease of use. The simple touch screen interface has automatic pre-configured system tests and can easily synchronize with any MS. This compact instrument provides maximum performance with 2D-enabled operation allowing the identification of more proteins compared to conventional approaches. The system provides the ultimate technology in easy maintenance, access, and service.

- Unrivaled ease of use with touch screen
- Maximum performance with state-of-the-art MS systems
- Easy maintenance, access, and service with integrated Self Diagnostic Tools
- Easy switching between 1- or 2-column configurations

Did You Know?

The EASY-nLC II uses two in-line nano-flow sensors for fast direct measurement of the actual A and B solvent flows. This allows unrivaled precision in the flow control algorithms: Advanced Flow Control (AFC) for the gradient delivery and Intelligent Flow Control (IFC) for loading and re-equilibrating the system. IFC furthermore integrates pressure sensor readings for the most rapid and robust execution and avoids interruptions caused by increases in back pressure for maximum productivity.

Why Split-free Nano LC?

- **Increased reproducibility**
Benefit: Nanoscale HPLC pumps generate pulse-free gradients with maximum accuracy at nanoliter flow rates.
- **Increased sensitivity**
Benefit: Extremely low volumes transfer the entire sample to the mass spectrometer ensuring that more ions enter the source.
- **Increased system stability**
Benefit: Integrated sample temperature control maintains sample integrity. The predefined flow path guarantees actual 'on-column' gradient and is unaffected by changes in back pressure.

Maximum Throughput with Unattended Operation

The EASY-nLC™ II nano-LC can run unattended for up to three weeks with two 25 mL solvent bottles and the ability to load up to 384 samples with a selection of vial and microtiter plate formats. The enclosed refrigerated sample storage compartment avoids condensation for increased sample stability.

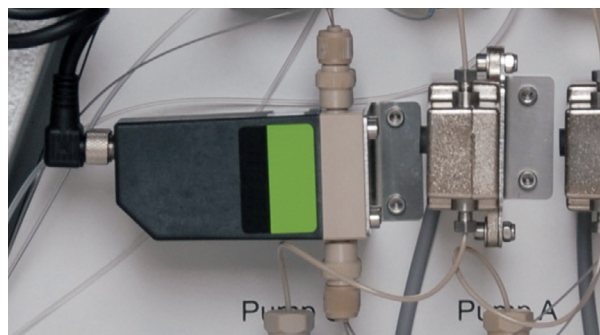
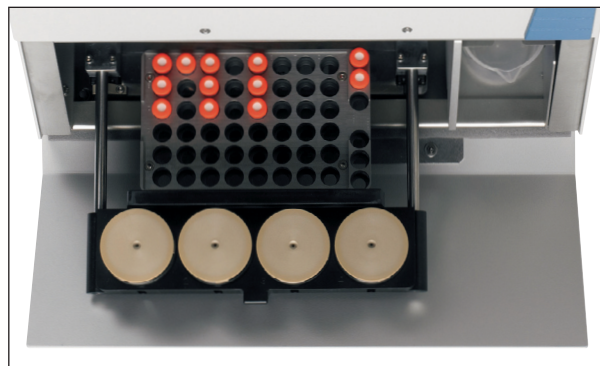
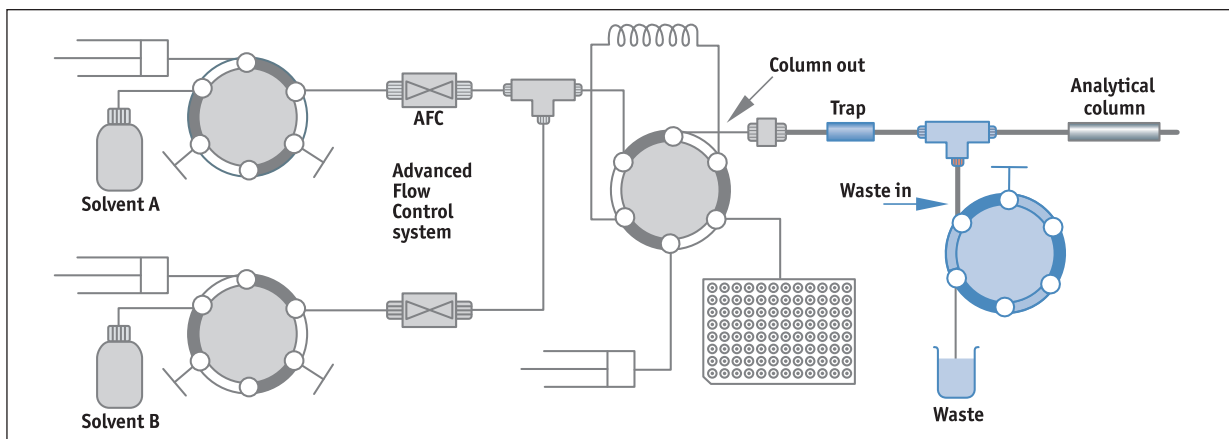


Image of actual flow sensor



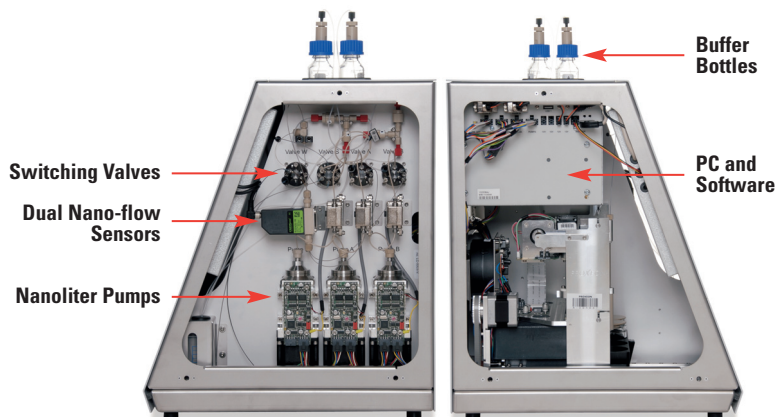
Easily switch between 1 or 2 column configuration

Stable, Pulsation-free Gradients from 100 nL/min

- Factory-configured flow paths minimize delay volume
- Maximum chromatographic accuracy with:
 - Split-free gradient mixing
 - Step-controlled nano-flow syringe pumps
 - Flow sensor control of mobile phase delivery

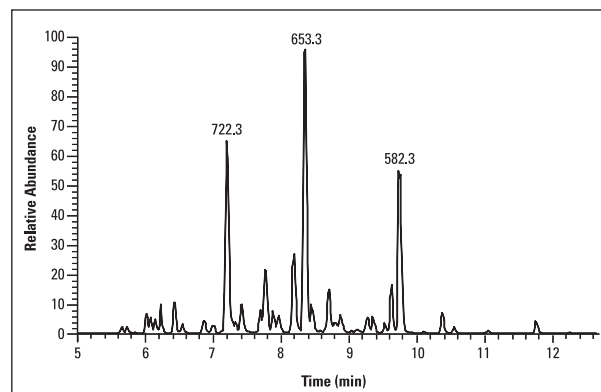
EASY-nLC II has the Simplest Maintenance, Access, and Service of all Nano-LC Systems Available

- Built-in PC and software
 - Automated maintenance steps
 - Remote access via internet for system interrogation
 - Event log for troubleshooting
- Modular design for easy component exchange
- Pulsation-free pumps minimize need for replacement of seals, valves and fittings



Thermo Scientific EASY-Column: Chromatographic Excellence at Nanoscale

- Compatible with any nanoscale HPLC system
- Optimized for online LC-MS
- Simple, flexible design
- Each column supplied with certificate of analysis



Sample: 100 fmol tryptic BSA digest
 Precolumn: EASY-Column™, 2 cm, ID100 µm, 5 µm, C18-A1 (SC001)
 Analytical Column: EASY-Column, 10 cm, ID75 µm, 3 µm, C18-A2 (SC200)
 Method: 300 nL/min, 5-35 % acetonitrile in 30 minutes
 Typical Peak Widths: (FWHM) ~ 7 sec