

# Product Specification (Rev. C)

## Sheet Fed Scanner Cleaning Card featuring Waffletechnology® (Letter/8.5")



<b>Product Name:</b>	Sheet Fed Scanner Cleaning Card featuring Waffletechnology® (Letter/8.5")	
<b>Item Number:</b>	KW3-SFS1B15WS	
<b>Style:</b>	Waffletechnology	
<b>Pouch Label:</b>	Waffletechnology Pouch	
<b>Inches (L x W):</b>	10" x 5"	
<b>mm (L x W):</b>	254 mm x 127 mm	
<b>Solution:</b>	Wonder Solvent	
<b>Volume:</b>	3.10 ml (+/-0.25)	
<b>Card Inches:</b>	8.5" x 4.5"	
<b>Card (mm):</b>	215.9 mm x 114.3 mm	
<b>Thickness Inches:</b>	0.012"	
<b>Thickness mm:</b>	.305 mm	
<b>Corner Radius:</b>		
<b>Special Features:</b>	N/A	
<b>Packaging:</b>	<b><u>Inner Pack</u></b>	<b><u>Master Casing</u></b>
<b>Quantity:</b>	15 cards	36 boxes
<b>Labeling:</b>	Labeled Box	
<b>Package type:</b>	Clay Coated Chipboard Box	Corrugated
<b>Inches (L x W x H):</b>	10" x 5.75" x 1.5"	21" x 19.5" x 9"
<b>mm (L x W x H):</b>	254 x 146 x 38.1 mm	533.4 x 495.3 x 228.6 mm
<b>Weight:</b>	0.62 lbs	25 lbs
<b>Weight Kilograms:</b>	0.281 kg	11.35 kg
<b>Cubic Ft:</b>	N/A	2.13 cf
<b>Cubic Meters:</b>	N/A	.06 m3
<b>Cards per unit:</b>	15 / box	36 / carton
<b>UPC Code:</b>		
	<b><u>Palletizing</u></b>	
<b>Quantity:</b>	32 Master Cartons	
<b>Inches (L x W x H):</b>	48" x 40" x 41"	
<b>mm (L x W x H):</b>	1219.2 x 1016 x 1041.4 mm	
<b>Weight Lbs:</b>	830 lbs	
<b>Weight Kilograms:</b>	376.8 kg	
<b>Cubic Ft:</b>	45.56 cf	
<b>Cubic Meters:</b>	1.29 m3	
<b>Cards per unit:</b>	17,280 / Pallet	

# Product Specification (Rev. C)

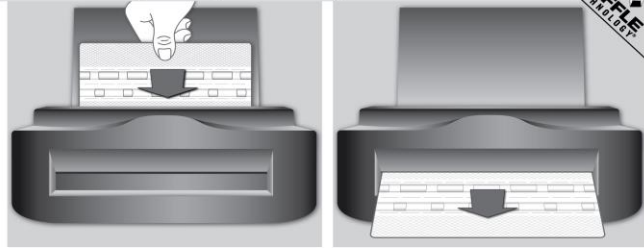
## Sheet Fed Scanner Cleaning Card featuring Waffletechnology® (Letter/8.5")



### Front of Pouch

#### Sheet Fed Scanner Cleaning Card (Letter/8.5")

**Use on:**  
• Sheet Fed Scanners



**Frequency:** Use once per week.

**Instructions:** Insert card into scanner as you would a document. Start scan process. Flip card over and repeat.

This product is saturated with Wonder Solvent solution. Category: Electronic cleaner, VOC Standard: 75%. Made in U.S.A. WARNING: This product contains a chemical known to the State of California to cause birth defects or other reproductive harm. Waffletechnology® is a registered trademark. This product is covered by the following US Patent: 7,732,040 and the Canadian Patent: 2,892,622. European Patent Pending.

### Back of Pouch

Español

**El uso en:**

- Escáneres de alimentación por hojas

**Frecuencia de uso:** Utilizar una vez a la semana.

**Instrucciones:** Inserte la tarjeta en el escáner como insertaría un documento. Inicie el proceso de escaneo. Dé vuelta la tarjeta y repita.

Français

**Utiliser sur:**

- Scanners avec système d'alimentation papier

**Fréquence:** Utilisation une fois par semaine.

**Instructions:** Insérez la carte dans le scanner comme vous le feriez pour un document. Démarrer le processus de numérisation. Démarrer le processus de numérisation.

Ce produit est saturé de solution Wonder Solvent. Catégorie: Nettoyage Electronique, Standard VOC: 75 %.

# Product Specification (Rev. C)

## Sheet Fed Scanner Cleaning Card featuring Waffletechnology® (Letter/8.5")

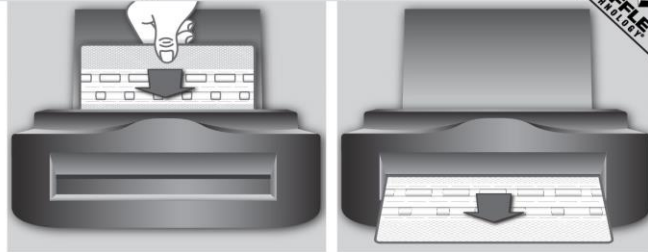


### Front of Chipper Label

#### Sheet Fed Scanner Cleaning Card (Letter/8.5")

**Use on:**

- Sheet Fed Scanners



**Frequency:** Use once per week.

**Instructions:** Insert card into scanner as you would a document. Start scan process. Flip card over and repeat.

15 Cards



This product is saturated with Wonder Solvent solution. CAT: Electronic cleaner. VOC Standard: 75%. Made in U.S.A.

### Back of Chipper Label

Español	<p><b>El uso en:</b></p> <ul style="list-style-type: none"> <li>• Escáneres de alimentación por hojas</li> </ul> <p><b>Frecuencia de uso:</b> Utilizar una vez a la semana.</p> <p><b>Instrucciones:</b> Inserte la tarjeta en el escáner como insertaría un documento. Inicie el proceso de escaneo. Dé vuelta la tarjeta y repita.</p>
Français	<p><b>Utiliser sur:</b></p> <ul style="list-style-type: none"> <li>• Scanners avec système d'alimentation papier</li> </ul> <p><b>Fréquence:</b> Utilisation une fois par semaine.</p> <p><b>Instructions:</b> Insérez la carte dans le scanner comme vous le feriez pour un document. Démarrer le processus de numérisation. Démarrer le processus de numérisation.</p>

Ce produit est saturé de solution Wonder Solvent. Catégorie: Nettoyage Electronique, Standard VOC: 75 %.